

Instructions for wear checks of play equipment

The equipment must be checked for correct operation and safety, especially the points listed below:

Proof of maintenance

Playground.....

Date of installation

Checks depend on the type of equipment. Any equipment with moving parts must be checked at least twice a year, static equipment at least once a year.

Intervals for maintenance work and checks generally depend on

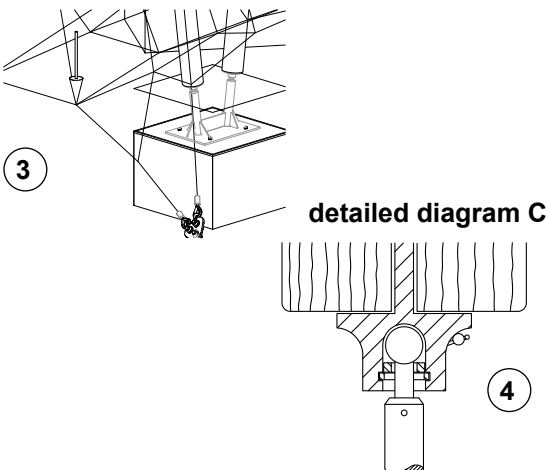
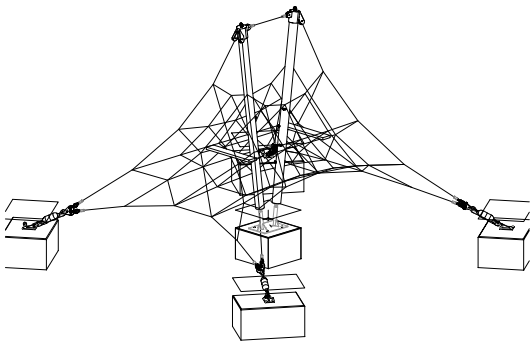
- the location
- the usage
- the frequency of use
- possible vandalism

For more details see also "General instructions for maintenance of playgrounds".

Small Net Pyramid
Order No. 13.01000/13.01100

Middle Net Pyramid
Order No. 13.02000/13.02100

Big Net Pyramid
Order No. 13.03000/13.03100



Wooden parts

1. Check for rot and, if necessary, smooth out splinters and round off sharp edges of cracks.
2. Check all bolts and screws are tight and retighten if necessary.

Function

3. Check pretension. Load the rope knot with 75 kg, may sink max. 50 mm, if necessary retighten the entire pyramid evenly.

Joints

4. Grease ball bearings via the lubricating nipples (see detailed diagram C).
5. Check all bolts and screws are tight and retighten if necessary.

Ropes

6. Check for wear and tear. Replace if steel reinforcement is damaged.
7. Check S-clamps and swages

Structural stability

8. Uncover the foundation once a year in order to check all parts of steel for corrosion.

Special notes, e.g. for repairs

Repair not carried out, it is still possible to play on equipment

Repair not carried out, equipment is taken out of action

All work carried out, everything is in order

Maintenance carried out by:

..... Date